



POSITION DESCRIPTION

POSITION TITLE	Research Fellow, Statistical Ecology
POSITION NUMBER	00057338
POSITION LEVEL	Research Fellow, Grade 1 or Grade 2
GROUP	Griffith Sciences
ELEMENT	Australian Rivers Institute
EMPLOYMENT TYPE	Full time

THE GROUP

Griffith Sciences is one of four academic Groups within Griffith University. We provide a setting of international standard for the pursuit of learning, teaching, research and professional practice. Our researchers are internationally recognised and cover a diverse array of disciplines and have access to some of Australia's most technically advanced research facilities.

The Group hosts a student body in excess of 7,000 across three campuses with representation from 135 countries. Griffith Sciences employs over 400 academic staff and more than 200 professional staff and has a total annual budget of over \$140 million.

THE INSTITUTE

The Australian Rivers Institute (ARI) based at Griffith University in southeast Queensland, is a world leader in the study of estuarine, freshwater and marine ecosystems. Based on three decades of research in marine and freshwater science, the Institute now hosts over 150 staff and postgraduate students, bringing together researchers across disciplines, including ecology, biogeochemistry, climate modelling, social science and economics. Our commitment to research with real impact sees the Institute partner with a range of institutions around the world to deliver benefits to society and our natural environment.

The Global Wetlands Program is based at Griffith's largest campus on the Gold Coast. This is a hub for marine science, in a city surrounded by surf beaches, estuarine wetlands and montane rainforest, and with easy access to two international airports.

THE PROJECT

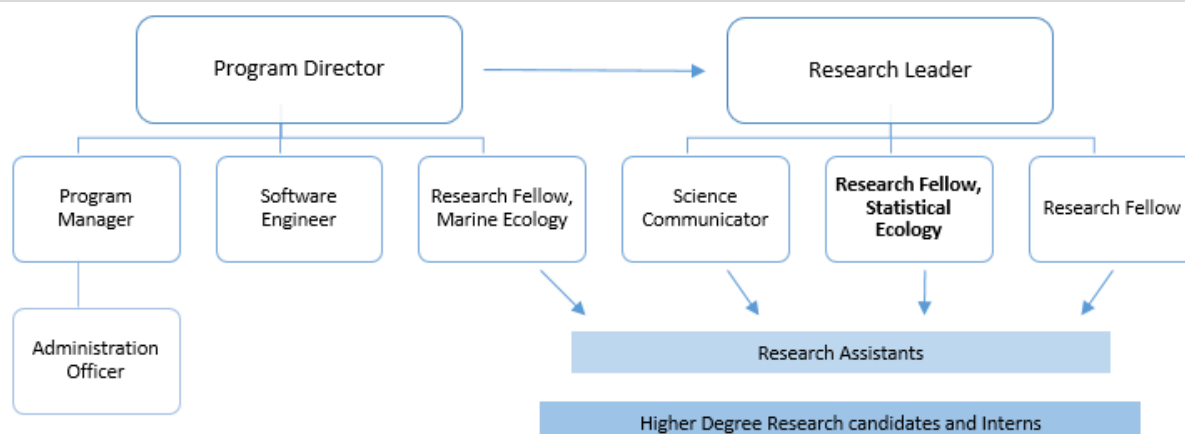
A new Global Wetlands research program is developing and applying globally applicable assessments of coastal wetland health to drive actions and investments towards protection, restoration and improvement of coastal wetlands worldwide. Coastal wetlands – mangroves, seagrass and saltmarsh – are valuable ecosystems with high biodiversity. However as the world's coastal cities continue to grow and industrialise, many coastal wetlands are facing major declines in ecosystem health.

This four-year, internationally-funded program is based at Griffith University, with partner universities around the world's coastlines. It will shine a spotlight on where the problems are, what needs to be done to protect what we have, and where rehabilitation will be most effective.

To accomplish the Program's objectives, the Institute is recruiting scientists who have productive publication records and capacity to solve significant marine science challenges. This is an opportunity to be part of a major initiative promoting the health of key marine ecosystems, and to advance the science of automated monitoring, urbanisation, multiple stressors and climate responses.

Researchers will work in a supportive team with complementary skills in ecology, statistical modelling, big data, automation and science communication.

REPORTING RELATIONSHIPS



POSITION OBJECTIVES

The Research Fellow, Statistical Ecology will have a key role in analysing data on environmental pressures and ecosystem state to quantify wetland health globally, and in modelling management scenarios to increase the effectiveness of coastal management actions.

KEY ACCOUNTABILITIES

Research Fellow (Grade 1)

- Lead the collection and statistical analysis of environmental data on the health of coastal wetlands (mangroves, seagrass, saltmarsh, estuaries).
- Model scenarios that test the effectiveness of different management actions on wetland health.
- Coordinate activities with other program participants to ensure effective team communication and collaboration throughout the lifetime of the project.
- Develop a good publication record in high impact, international, esteemed peer-reviewed journals and to seek competitive funding.
- Manage the preparation and formulation of publications, figures and maps, presentations and research reports arising from the research.
- Assist in the development of research proposals.
- Assist with supervision of higher degree research candidates.
- Support compliance with relevant legislation and University policies and procedures, including research ethics, equity and health and safety, laboratory standards and exhibit good practice in relation to same.
- Support fair, ethical and professional work practices in accordance with the University Code of Conduct.

Research Fellow (Grade 2)

- Lead the collection and statistical analysis of environmental data on the health of coastal wetlands (mangroves, seagrass, saltmarsh, estuaries).
- Model scenarios that test the effectiveness of different management actions on wetland health.
- Coordinate activities with other program participants to ensure effective team communication and collaboration throughout the lifetime of the project.

- Maintain a good publication record in high impact, international, esteemed peer-reviewed journals and to seek competitive funding.
- Manage the preparation and formulation of publications, figures and maps, presentations and research reports arising from the research.
- Assist in the development of research proposals.
- Assist with supervision of higher degree research candidates.
- Lead and promote compliance with relevant legislation and University policies and procedures, including research ethics, equity and health and safety, laboratory standards and exhibit good practice in relation to same.
- Lead and promote fair, ethical and professional work practices in accordance with the University Code of Conduct.

SELECTION CRITERIA

Essential:

Research Fellow (Grade 1)

- PhD in a relevant field with research experience in statistical ecology, ecological modelling, or spatial ecology.
- A track record of publication in high-impact journals.
- Demonstrated excellent interpersonal and negotiation skills together with high level written and verbal communication skills.
- Demonstrated ability to work independently and with minimal supervision to meet competing deadlines and work effectively as a member of a team and communicate with a range of stakeholders.

Research Fellow (Grade 2)

- PhD in a relevant field with research experience, including leadership, in statistical ecology, ecological modelling, or spatial ecology.
- Well established track record of publication in high-impact peer-reviewed journals.
- Demonstrated excellent interpersonal and negotiation skills together with high level written and verbal communication skills.
- Demonstrated ability to work independently and with minimal supervision to meet competing deadlines and work effectively as a member of a team and communicate with a range of stakeholders.

Desirable:

- Ability to conduct collaborative research in multidisciplinary and/or multi-institutional teams and experience in the preparation of competitive research grants.
- Knowledge of the R program.
- Experience in computer programming, and development of algorithms that automate analysis.
- Experience in the spatial analysis of marine ecological data.
- Experience in handling large datasets.
- Experience in the development of new statistical techniques for application to ecological data.

- Experience in the supervision of higher degree research candidates.

BENEFITS AND CONDITIONS

The following links provide access to information regarding the range of benefits enjoyed by Griffith staff and also key information regarding employment conditions.

BENEFITS	CONDITIONS
<ul style="list-style-type: none"> • Education assistance for Academic staff • Education assistance for General staff • Health plan • Salary packaging • Superannuation 	<ul style="list-style-type: none"> • Code of conduct • Academic Staff Enterprise Agreement • General Staff Enterprise Agreement • Fairwork Australia Information Statement

Griffith is committed to diversity and inclusion for people from all backgrounds and identities and committed to the recognition, values and contribution of the First People of this nation.

The Australian Rivers Institute is committed to supporting early career researchers and has a number of initiatives to support career progression.

Griffith offers professional development opportunities to support employees in their career progression and offers an excellent working environment that supports flexible working arrangements.

For more benefits and conditions information follow this link: [Griffith University | Pay, conditions and benefits > Employment](#)